




Logo Button

## TURN ON YOUR LIBRATONE ZIPP

- Press the Libratone **“Logo Button”** to turn it on.

 *Make sure your home Wi-Fi is up and running and within range of both your speaker and Mac/PC.*

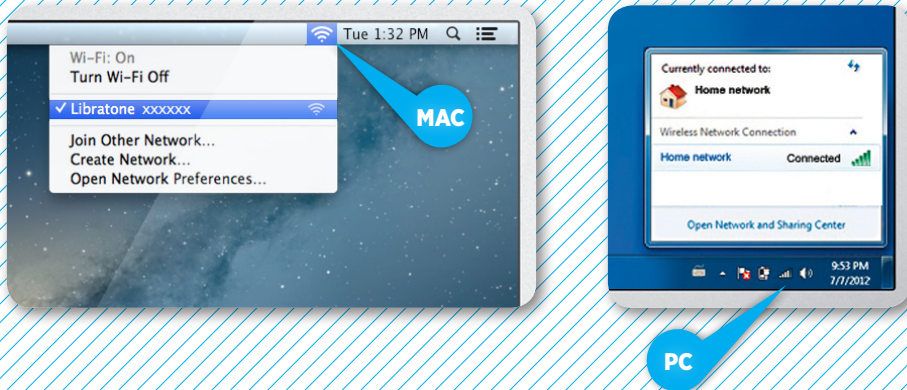


Status Indicator

PlayDirect & Setup

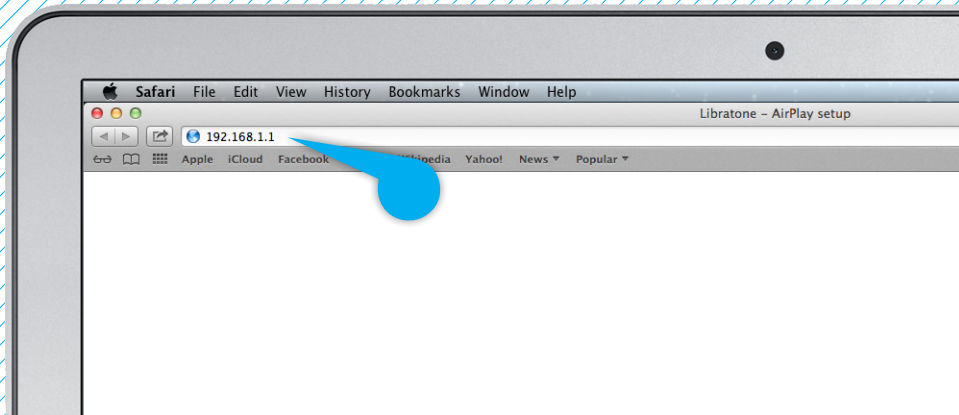
## PUT YOUR SPEAKER IN SETUP MODE

- Press the **“PlayDirect”** button and wait until the **“Status Indicator”** starts breathing WHITE.



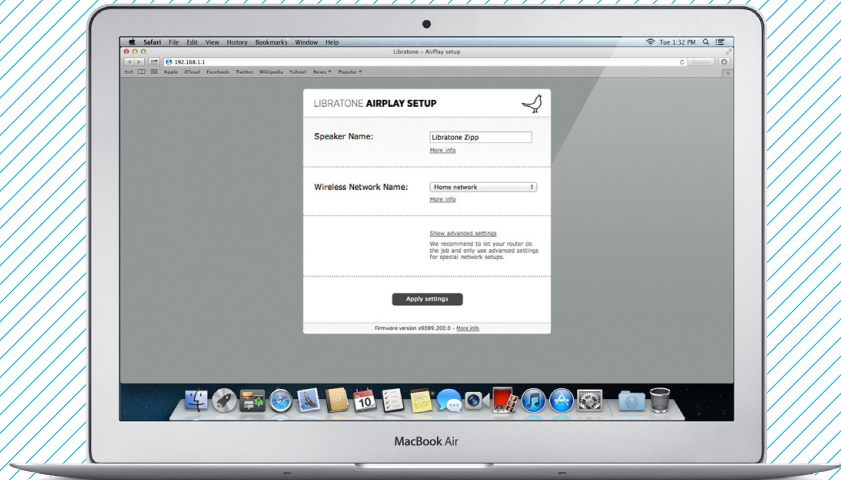
## FIND YOUR LIBRATONE ZIPP NETWORK

- Open **“Wi-Fi”** connections on your Mac/PC.
- Choose the **“Libratone”** network.



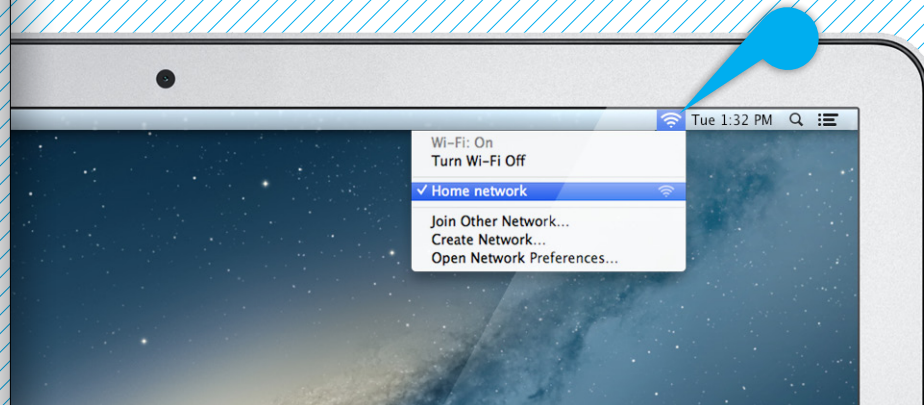
## ENTER YOUR SPEAKER SETUP PAGE

- Open your browser.
- Type **192.168.1.1** in the browser and press **“ENTER”**.



## SETUP YOUR SPEAKER

- Type in: **Speaker name**, your **Home Wi-Fi network** and **Password** (if needed).
- Click **“Apply settings”**.



## CONNECT TO YOUR HOME NETWORK

- Open **“Wi-Fi”** connections on your Mac/PC.
- Choose your **Home Wi-Fi network**.

*Your Mac/PC may do this automatically.*

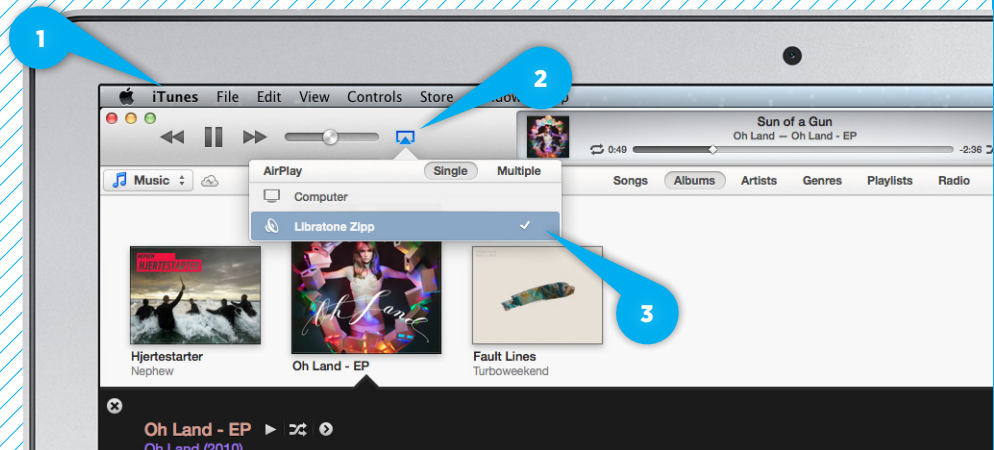


Status Indicator

## YOUR SPEAKER IS READY!

If the **“Status Indicator”** is breathing WHITE you're alright! And you're ready for AirPlay.

*If it's not, go to Page 21 and start over or visit: [www.libratone.com/faq](http://www.libratone.com/faq) for support.*



## SET YOUR MUSIC FREE

- Open **“iTunes”** on your Mac/PC.
- Click **“AirPlay”** icon and choose your speaker.
- Select **“Play”** and set your music free.