

LIBRATONE LOOP

WIFI / BT 4.0

OWNER'S MANUAL

INDEX

3 Congratulations

4 FullRoom™

5 AirPlay / Bluetooth / DLNA

6 Introduction

7 Quick AirPlay Setup (Wi-Fi)

8 Quick DLNA Setup

9 Quick Bluetooth Setup

10 Libratone App

11 Factory reset

12 Cover change

13 Wall mount

14 Troubleshooting / Register / Warranty

15 Speaker specs

16 Wi-Fi / Bluetooth specs

CONGRATULATIONS!

YOU HAVE TAKEN A LEAP OF FAITH.

A step towards a world of wireless bliss.

It takes a great deal of courage to liberate yourself from the shackles of speaker cables and ordinary stereo systems.

But you have jumped right into it. **FOR THIS WE SALUTE YOU.**

We have done everything in our power to make your Libratone sound system as simple and user friendly as possible. Hopefully this manual will answer any questions you might have.

Thank you for buying our product. Thank you for joining the revolution.

FULLROOM™



Libratone Loop is based on a patented audio technology. We call it FullRoom™ sound.

Allow us to explain:

Regular speakers have closed cabinets. They push the sound waves in one direction - forward.

Libratone Loop, on the other hand, plays like an acoustic instrument, dispersing sound waves in multiple directions, giving you a 360° sound experience.

FullRoom™ technology means that you only need one sound source to get a room full of sound.

Whether you hang it on the wall, place it on a shelf or put it on the ground you get the same amazing sound quality.

Placing Libratone Loop close to a wall will reflect the sound off the wall. This gives you a deeper bass and an even fuller soundscape. We don't recommend you place Libratone Loop in a corner since this will limit the FullRoom™ experience, but it's up to you.

MUSIC AT HOME



AirPlay is a technology designed by Apple to transmit audio within a Wi-Fi network. Once your Libratone speaker is connected to your home Wi-Fi, you can stream music via services like Spotify, Deezer, WiMP, TuneIn, Rdio, iTunes etc. from your iPhone, iPad, iPod touch or computer. This means that you have your entire music and movie library in the palm of your hand, ready to be set free.

MUSIC ON THE GO



Bluetooth allows you to wirelessly play music in CD-quality from any iOS, Android or Windows Phone device to your Libratone speaker. By enabling a direct connection between the audio source and the speaker, the need for a wireless network is eliminated.

Pairing is easily achieved through NFC on your Android or Windows Phone device or through the Bluetooth menu on your iOS device.

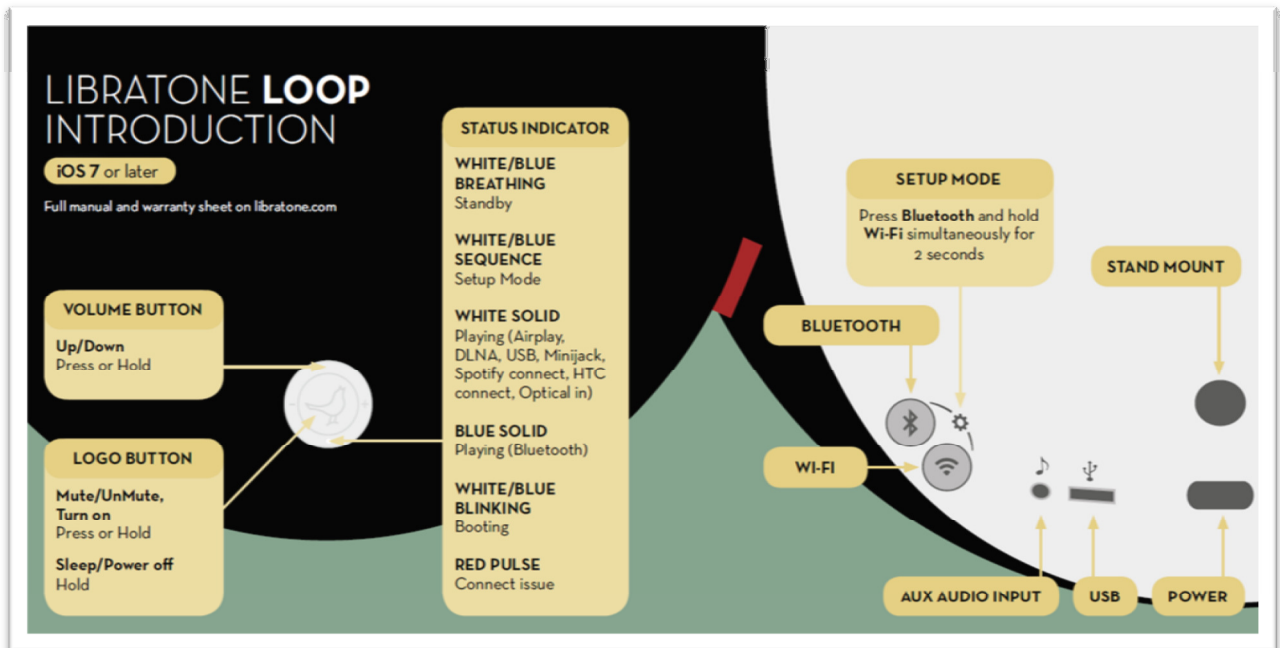
DLNA



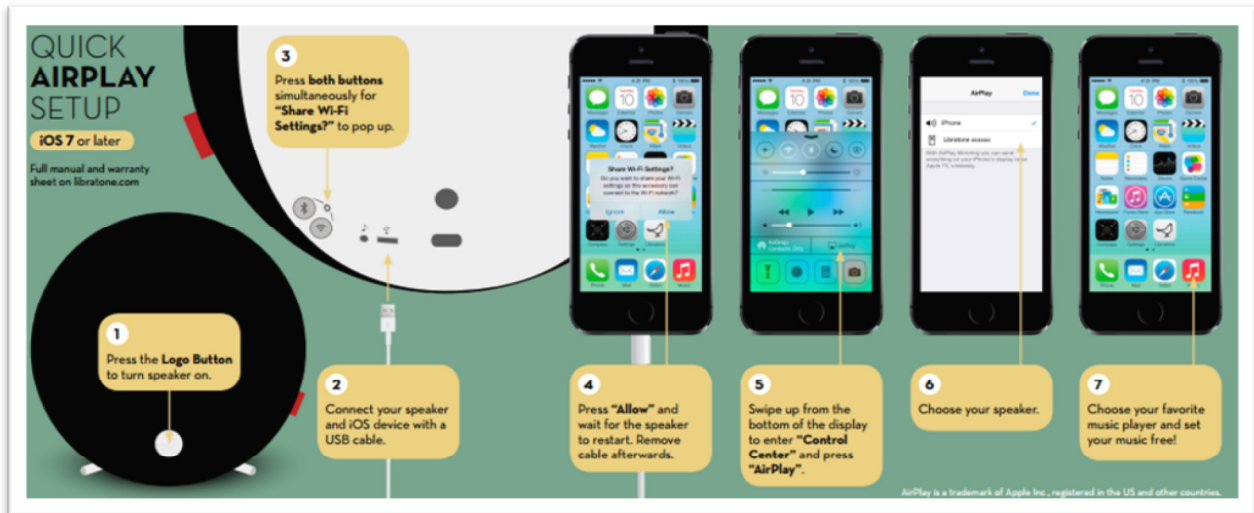
Built-in DLNA technology allows you to stream music to your Libratone speaker from most devices using Android 4.0 or later, Blackberry OS 10 or later, and computers running Windows 7 or 8.

For more info go to www.libratone.com/dlna

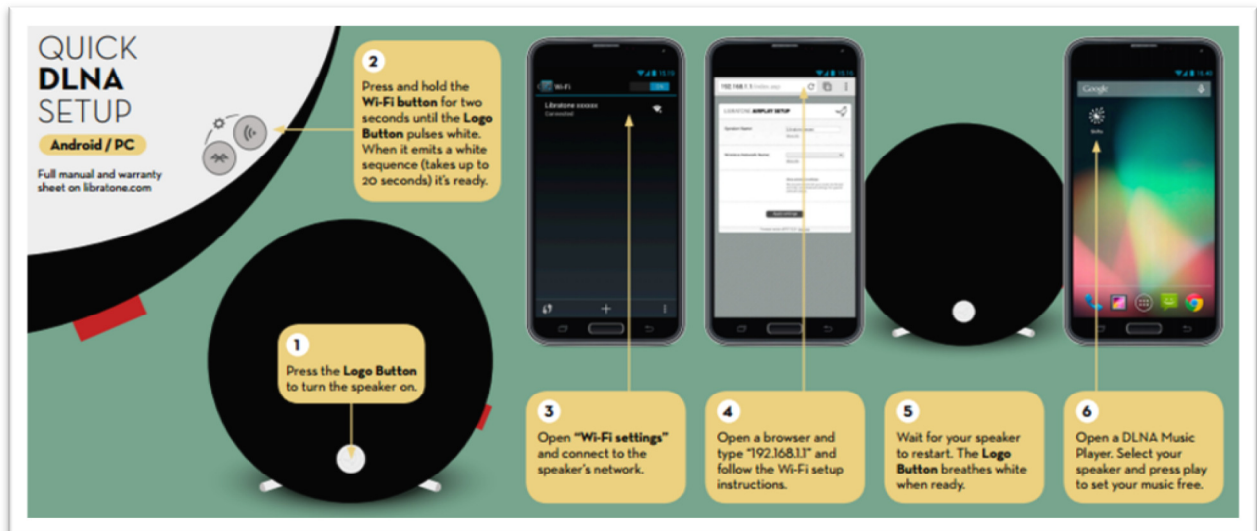
INTRODUCTION



QUICK AIRPLAY SETUP



QUICK DLNA SETUP



QUICK BLUETOOTH SETUP



LIBRATONE APP



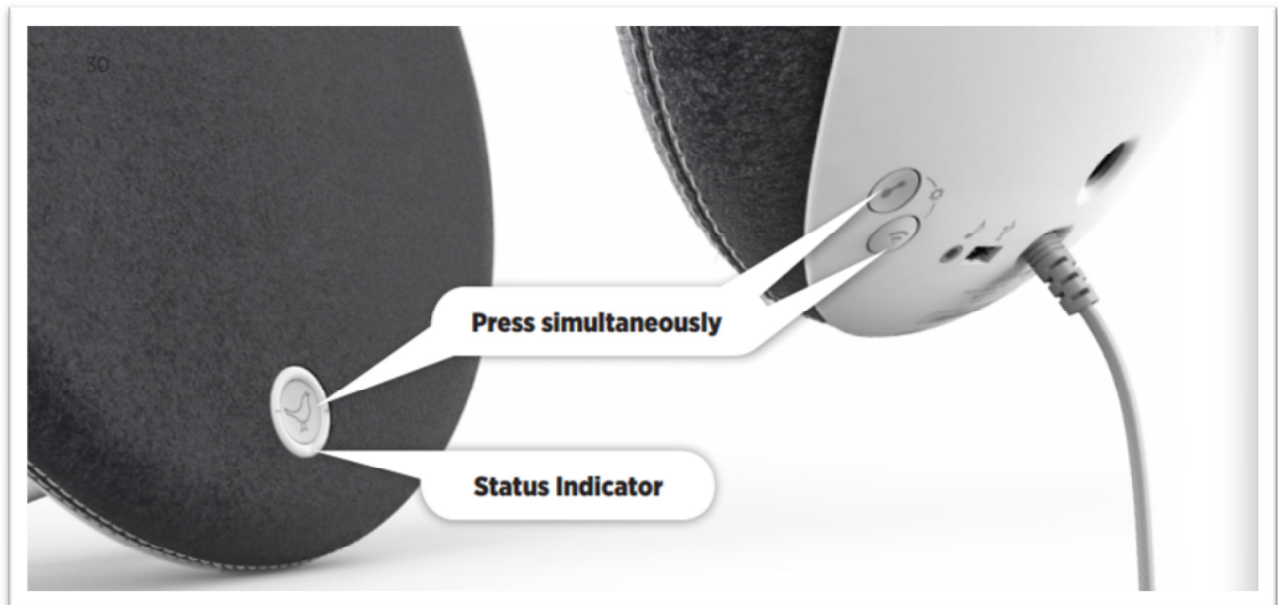
Add another dimension to your Libratone Diva by downloading the free Libratone app from the Apple App Store to your iOS device.

The Libratone app keeps your speaker firmware up to date and allows you to customize the sound to your taste in music and acoustic surroundings, enhancing the FullRoom™ experience.

The Libratone app is also available for Android.



FACTORY RESET



To clear all speaker settings on your Libratone Loop you need to perform a factory reset.

- Press and hold the “**Bluetooth Button**”, the “**AirPlay Button**” and the “**Logo Button**” simultaneously until the “**Status Indicator**” starts blinking WHITE or BLUE, then release the buttons.
- When the “**Status Indicator**” shows a WHITE or BLUE sequence after approx. 20 seconds, your speaker has been factory reset and is ready for setup.

COVER CHANGE

Zipp comes in Libratone's signature Pepper Black. Extra covers are sold separately in a range of colors to suit all tastes and complement any kind of interior. Shop online at www.libratone.com.

When changing the speaker cover "*gentle is the name of the game*".

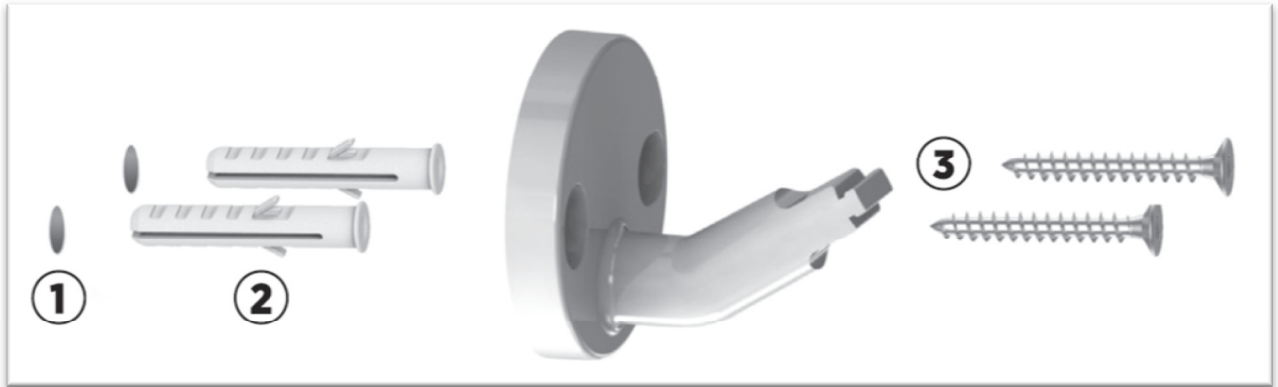


Remove power cable, stand and the screw on the backside of the speaker. Once backplate is removed - remove the wool cover.

To dress the speaker again, follow the above steps backwards.

Please find the cover change video at our support page: www.libratone.com/LoopCover

WALL MOUNT



Ensure that the wall is able to support the weight of the system.

- Drill two 8 mm holes in your wall and push in the rawlplugs. (1) (2)
- Make sure that the wall mount is level.
- Mount the wall mount on the wall. (3)
- The system is mounted properly when a distinct click from the locking mechanism is heard.

TROUBLESHOOTING

Our hearts and souls are in your Libratone Loop. However, if it's acting up and you can't find your answer here, please visit our support page at:

www.libratone.com/support

REGISTER

To help us give you the best service possible, we encourage you to register your product at:

www.libratone.com/free-cover

WARRANTY

Don't worry. Your Libratone Loop is covered by our warranty. Since the warranty follows national laws, it differs from country to country. For warranty information regarding your country please visit:

www.libratone.com/warranty

Warranty information is occasionally printed on your invoice as well.

SPEAKER SPECS - LIBRATONE LOOP WIFI / BT 4.0 (LT-410)

DRIVE UNITS

TECHNOLOGY

Wireless active speaker with built-in Digital Signal Processing and Digital Amplification. Implements Libratone patent pending FullRoom™ acoustic technology for exceptional sound performance.

WIRELESS

AirPlay lets you stream audio wirelessly from your iPad (3rd generation), iPad 2, iPad, iPhone 6 and 6 plus, iPhone 5, iPhone 4S, iPhone 4, iPhone 3GS, iPod touch (5th, 4th and 3rd generations) with iOS 4.3.3 and iTunes 10.2.2 (Mac and PC) or later. DLNA lets you stream audio from most Android devices running 4.0 or later.

INPUTS

AirPlay, Bluetooth, DLNA, USB audio (iPod, iPhone and iPad) and 3.5 mm audio minijack for analog sound. Spotify Music and QQ Music.

1x4" woofer, 1 passive radiator and 2x1" ribbon based tweeter.

AMPLIFIER

120W total. 2.1 Stereo system with FullRoom™ DSP optimization and Full Digital Amplification.

ACOUSTIC PERFORMANCE

Frequency range: 40-20.000 Hz.
Max. output: 99 dB SPL/ 1m.

POWER

100-240 Volt AC, 50/60Hz.
Power consumption 20W internal power supply.

DIMENSIONS

Ø: 33.3 cm. / 13.1 inch
Depth: 8.3 cm / 3.27 inch.

WEIGHT

2.7 kg. / 5.7 pounds.

WI-FI SPECS - LIBRATONE LOOP WIFI / BT 4.0 (LT-410)

WLAN STANDARDS

IEEE 802.11b, IEEE 802.11g.

FREQUENCY BAND

2.412 – 2.472 GHz (2.4GHz ISM Band, 13 Channels),
Channel 1 - Channel 13,
North America FCC, Japan Telec, Europe ETSI

MODULATION

802.11b mode (DS-SS: IEEE 802.11b)
802.11g mode (OFDM: IEEE 802.11g)

TRANSMISSION SPEED

802.11b mode: 11Mbps, 5.5Mbps, 2Mbps, 1Mbps
802.11g mode: 54Mbps, 48Mbps, 36Mbps, 24Mbps, 18Mbps, 12Mbps, 9Mbps, 6Mbps

TX POWER

802.11b mode: 16.5dBm, +/-1dB
802.11g mode: 15.0dBm, +/-1dB

POWER-ON RAMP

< 2us

RF CARRIER SUPPRESSION

< 15dBc

TX EVM

802.11b mode: <-22dB.
802.11g mode: <-25dB

RX SENSITIVITY

802.11b mode: <=-82dBm @ 1Mbps, <=-81dBm @ 2Mbps, <=-81dBm @ 5.5Mbps, <=-78dBm @ 11Mbps

802.11g mode: <=-82dBm @ 9Mbps, <=-81dBm @ 18Mbps, <=-75dBm @ 36Mbps, <=-70dBm @ 54Mbps

BLUETOOTH SPECS

FREQUENCY BAND

2,402 MHz to 2,480 MHz

MODULATION

8 DPSK, PI/4 DQPSK, GFSK

MAXIMUM DATA RATE

3Mbps (typical 1.6Mbps)

OPERATING RANGE

Approx. 10m

RF SENSITIVITY

0.1% BER at -88dBm

TRANSMIT POWER

BER/EDR Class2 <4dBm, BLE<10dBm

THIS IS IT!
 TIME TO SET YOUR
 MUSIC FREE
 WE WISH YOU
 GODSPEED



AirPlay, the AirPlay logo, iPad, iPhone, iPod and iPod touch are trademarks of Apple Inc., registered in the U.S. and other countries. Libratone and FullRoom are registered trademarks of Libratone A/S.

LIBRATONE
 360 Scandinavian™

LIBERTY LIBRATONE

DIFFERENT SPELLING. SAME MEANING.