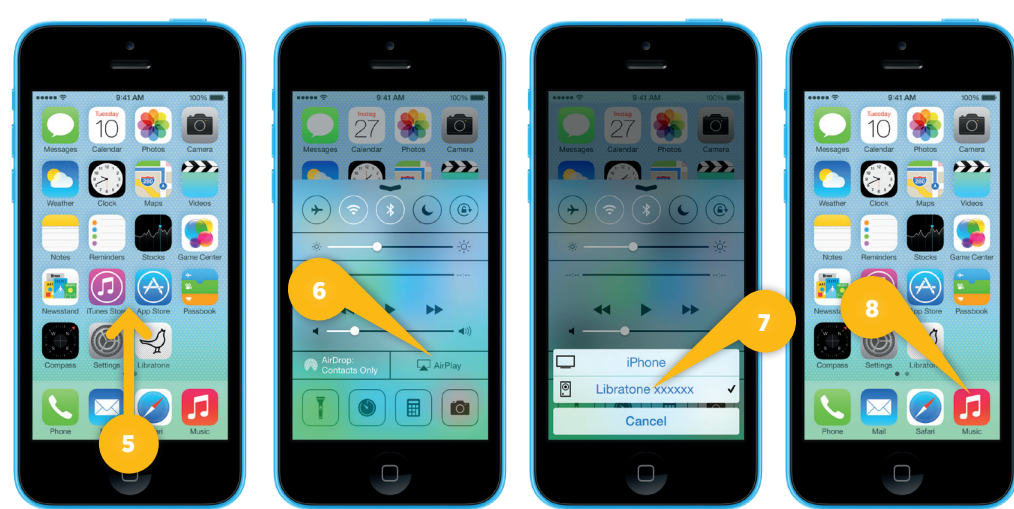




SETUP AIRPLAY WITH USB CABLE

- Make sure your home Wi-Fi is up and running, and within range of both your speaker and iPhone.
- Press the Libratone **"Logo Button"** to turn it on. **1**
- Connect your iOS device (iOS 5 or later) and Libratone Loop with a USB cable. **2**
- Press the **"PlayDirect"** and **"AirPlay"** buttons simultaneously for **"Share Wi-Fi Settings"** to pop up. **3**



SET YOUR MUSIC FREE

- Press **"Allow"** on your device and wait for Libratone Loop to reboot. **4**
- Swipe from the bottom of the display to access Control Center. **5**
- Press the **"AirPlay"** icon and choose your speaker. **6 7**
- Select **"Music"** and set your music free. **8**